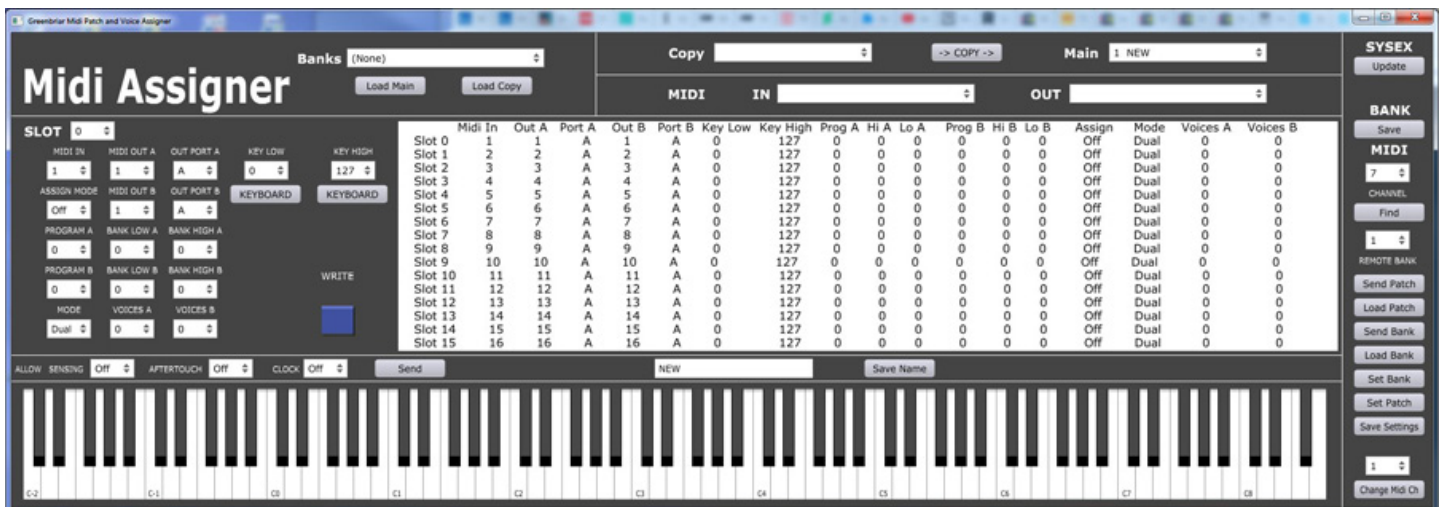
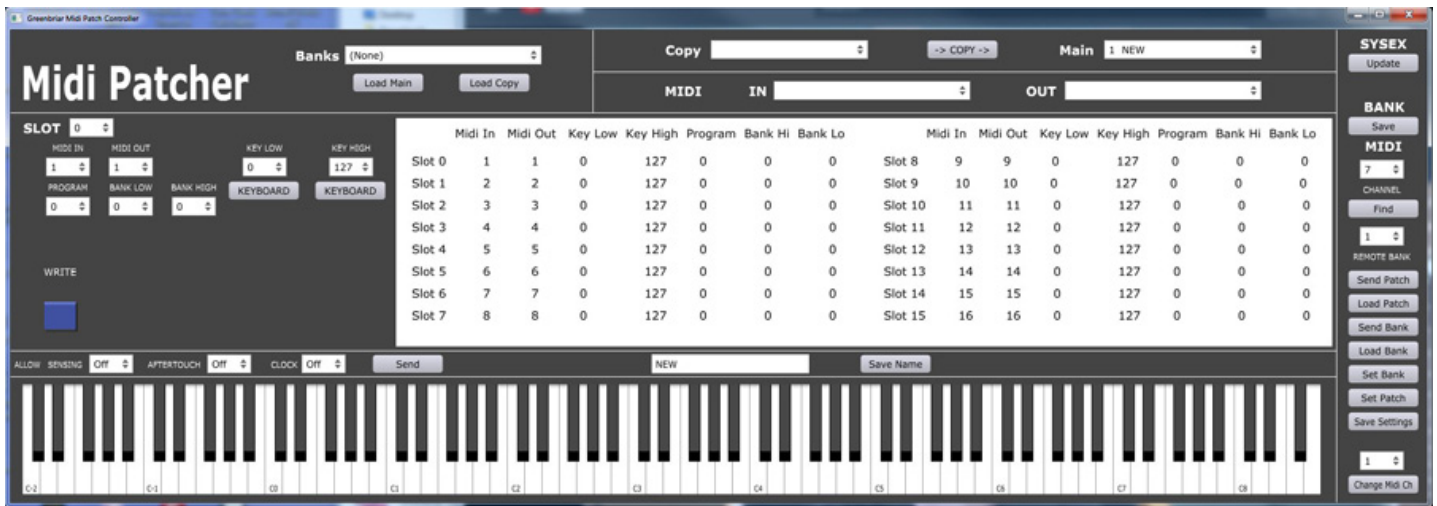


Greenbriar Studio Librarian / Editor for the Midi Patcher and Midi Assigner



Installation

Installation just requires you to unzip the distribution file in any folder where you have write permission (not in Applications on the Mac for example). This will allow the app to create the local auto settings file. Just double click the app to run. No license is needed for this product

Common Features

Greenbriar Studio editors have some common features that all our editors share - PC and Mac versions, auto saving of certain settings, a listing of all your saved library banks and sysex read and write.

Versions are available for Windows 7 and up Mac 10.11 and up. Please specify version when ordering.

Auto save - when you change the midi in or out or channel, or change the Patcher's midi channel, settings are automatically saved so you don't have to reselect them every time you start the app. It also saves the location of your saved bank files, so they can be loaded from a drop down box. The default location is the app folder, but when you save a library, the folder you save it to becomes the new bank file folder. So just save your library/bank files to the same folder and they will be in your drop down list to reload.

The drop down list works as follows - if you select a bank from the drop down list, the Load Main and Load Copy buttons will load that bank into either Main or Copy. If (None) is selected, you will get a standard load file window to select what bank to load from anywhere on your computer.

Copy Bank - this is just to make it easy to rearrange banks. You can load any bank into it and then select a patch in Copy and a patch in Main and the Copy button will overwrite the Main patch with the Copy patch. You can write into the blank bank that comes up when you open the app, or into a bank that you have loaded.

Midi Patcher and Midi Assigner

This editor works with the Greenbriar Midi Patcher and Midi Assigner boxes.

The basic functions of the editor are - to allow you to see the value of every control for a patch at once and to be able to load and send patches and entire banks directly to and from the Patcher and Assigner boxes. You can also set which midi channel the Patcher uses to receive sysex and patch change commands. There is also a Find button, that will scan all midi channels and auto set the Patcher's midi command channel selection for you.

Offline

Offline you can work with libraries. Libraries are single banks of 128 patches that you have saved and can be loaded into one of two internal data sets - Main - which is the one you can edit on screen, save and transmit via midi, and Copy - which has only one function - to let you rearrange patches and presets. From Copy you can select a patch or preset and move it to any patch or preset position in Main. So you can easily rearrange your sound libraries.

Online

Select Midi in and out ports and you are in online mode (all Offline functions still work as well). The right side command buttons are now active.

Both

You will see the exact values of all settings of every patch you call up.

The Keyboard - Used as a quicker way of selecting key ranges for patch channels.

Loading Patches from the Midi Patcher and Midi Assigner.

First, make sure you have bidirectional midi working by selecting your midi ports and then using the find button to read the Patcher command channel. If connected correctly, the Midi channel under BANK will change to the channel set on the unit and the Allow settings will be loaded. You can change the Patcher command channel from Change Midi Ch button at the bottom right, or on the unit itself. Then use Find again, or manually set the Midi channel. Now you are ready to download your patches.

When sending or receiving patches from the Patcher, all selection is done in the editor. No changes are required on the Patcher itself. You can read from and send to all of the banks on the Patcher and Assigner. The editor only loads a single bank at a time, but can write to and read from all banks in the Patcher.

Load Patch will load the patch number you have selected in Main from the Bank selected in Bank - note Banks are 0-13 for the Assigner or 0-15 for the Patcher in the editor.

Load Bank will load the entire selected Bank.

Send Patch and Send Bank will send the currently selected patch or the entire loaded bank to the Midi Patcher - writing it to the Bank selected.

Set Bank and Set Patch switch the current Bank and Patch on the Midi Patcher - remote patch select.

Save Settings tells the Patcher to save as startup defaults - the current midi channel as the command channel and the current Bank and Patch as the startup bank and patch.

Save Name lets you change a patch name. The name can only be 16 characters so that it can be sent back and forth and displayed by name on the Patcher LCD display.

The two Keyboard buttons are used to set the key range. Click the button and then click a key on the on screen keyboard and the key value will be selected. Or you can use the pulldown menu to select the key.

Write - this saves the changes you make to each channel. Changes are not saved until you click the Write button.

There are three 'Allow' settings - they determine whether to pass through or block certain midi messages you might want to filter out. Sensing blocks the single sensing message, aftertouch blocks polyphonic and channel aftertouch and Clock blocks clock, start, stop and continue messages (helps me prevent drum machines from starting up when I'm playing them from a sequencer).

Note - turning off Clock does NOT prevent the arpeggiator from syncing to clock. If the arpeggiator is running on clock, the clock is still used for that purpose, it is just not passed through afterwards.

The Send button next to the Allow selections sends and saves them as defaults in the Midi Patcher.

The Update button is to upload new system software to the Midi Patcher and Assigner. The boxes will only accept the correct update for their unit type. After the button is pressed, you will be asked to open the sysex file to upload. NOTE - to upload new software, channel setting is not important. You can also use any sysex program, such as C6, that can pause 300 ms between sysex messages.

Note - to do a system update, connect your computer midi out directly to the Patcher or Assigner midi in, with no other midi devices connected. This is to make sure there is no interfering midi traffic while the upload is taking place. More detail is in the Patcher and Assigner hardware manual.

The arpeggiator, being a performance function, is only accessible from the Patcher hardware interface. All the arpeggiator settings can also be saved as a startup default by the Patcher Write button.

Version 1.0 August 2019
Greenbriar Studio
www.GreenbriarStudio.com